

Urban Shore Fishing

Access for all....

by Tom Duffy



Across from the barrier...

Bold Point Park

East Providence, Rhode Island

Bold Point Park is a fairly newly developed small park directly across from Fox Point Park in Providence. The park's main attraction is the boating access to the Providence River with handicap capabilities on the ramp itself.

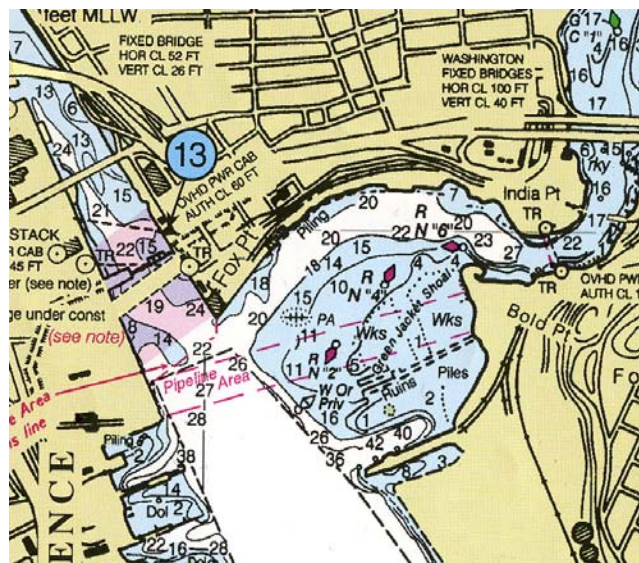
Although this spot is very popular for kayak fishermen, you will find plenty of shore access to get to the fish when they are on their way up river to Pawtucket.

Wading can be reasonably close to the current if you time it right when the boat ramp is not too busy. This is a reasonable spot for kids, however keep in mind that the water edges are not fully developed like some other parks. A lot of kayakers put in here for the short paddle to the hurricane barrier.

Also, keep in mind that several commercial vessels in the area draw a lot of water and security officers.

On the west shore you will find some old structures a short cast away which is a popular area for the bait fishermen. For those who fly fish or like to use the current for lures, I recommend the area just east of the boat ramp. The local bait shops in Providence will tell you that anything that looks, swims or smells like a pogie is popular in early summer here.

Also, like any urban spot at night, don't fish alone and come back with the little ones during the day.



INFORMATION TO NOTE

GPS... 41°48.941"N
71°23.484"W

Parking... excellent

24 Hour access... yes

Canoe/Kayak use... kayak only

Fly Fishing... yes

Busy spot... yes, w/boat traffic ramp

Kid friendly... yes, during the day

Wading... yes

Cleats Needed... no